

The Region of Murcia is in the south-east of Spain, between the Betic Mountains and the Mediterranean sea. Murcia has all different types of **landscapes** – **mountains, valleys, plateaus, rivers, plains** and **coast**.

### The River Segura

The River Segura and its **tributaries** is the most important river in the region. The biggest tributaries are the Mundo, the Alhárabe, the Mula and the Guadalentín rivers. There is little rain in Murcia so these rivers give water to grow all the different **crops** – **vegetables, fruit** and **flowers**. **Olives** and **grapes** are also grown in Murcia.

### The Mar Menor

The **Mar Menor** is the biggest **natural lake** in Spain. It is a salt water **lagoon** next to the Mediterranean **sea**. It is the biggest lake in Europe and is a **protected area** with many important **plants** and **animals**. It is separated from the sea by **a strip of land** 22km long and about 100m wide called La Manga del Mar Menor.

#### Read and answer the questions.

a What is the most important river in Murcia called?

\_\_\_\_\_

b What are the Mundo, the Alhárabe rivers?

\_\_\_\_\_

c Where is the Mar Menor?

\_\_\_\_\_



#### DID YOU KNOW?

Murcia is the biggest producer of vegetables, fruit and flowers in Europe.



Mar Menor

### The Betic Mountain Range

The western part of the Betic Mountain Range is in the Region of Murcia. The highest point of the **mountain range** is the **summit** of Revolcadores in the Sierra de Moratalla, at 2,027 m, but recent maps say it is smaller, and the biggest mountain is really Los Obispos.

Label the map with the following mountains and rivers:

The Betic Mountain Range

Revolcadores

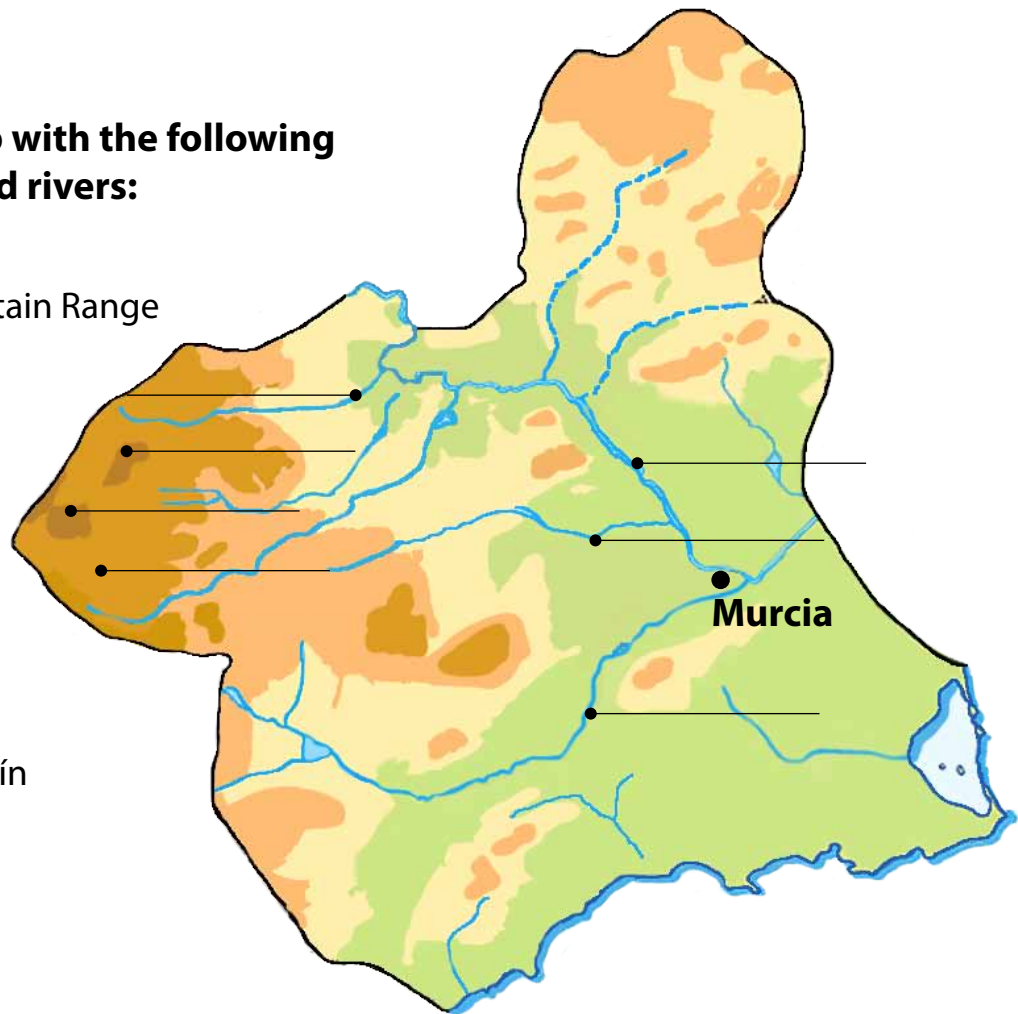
Los Obispos

River Segura

River Benamor

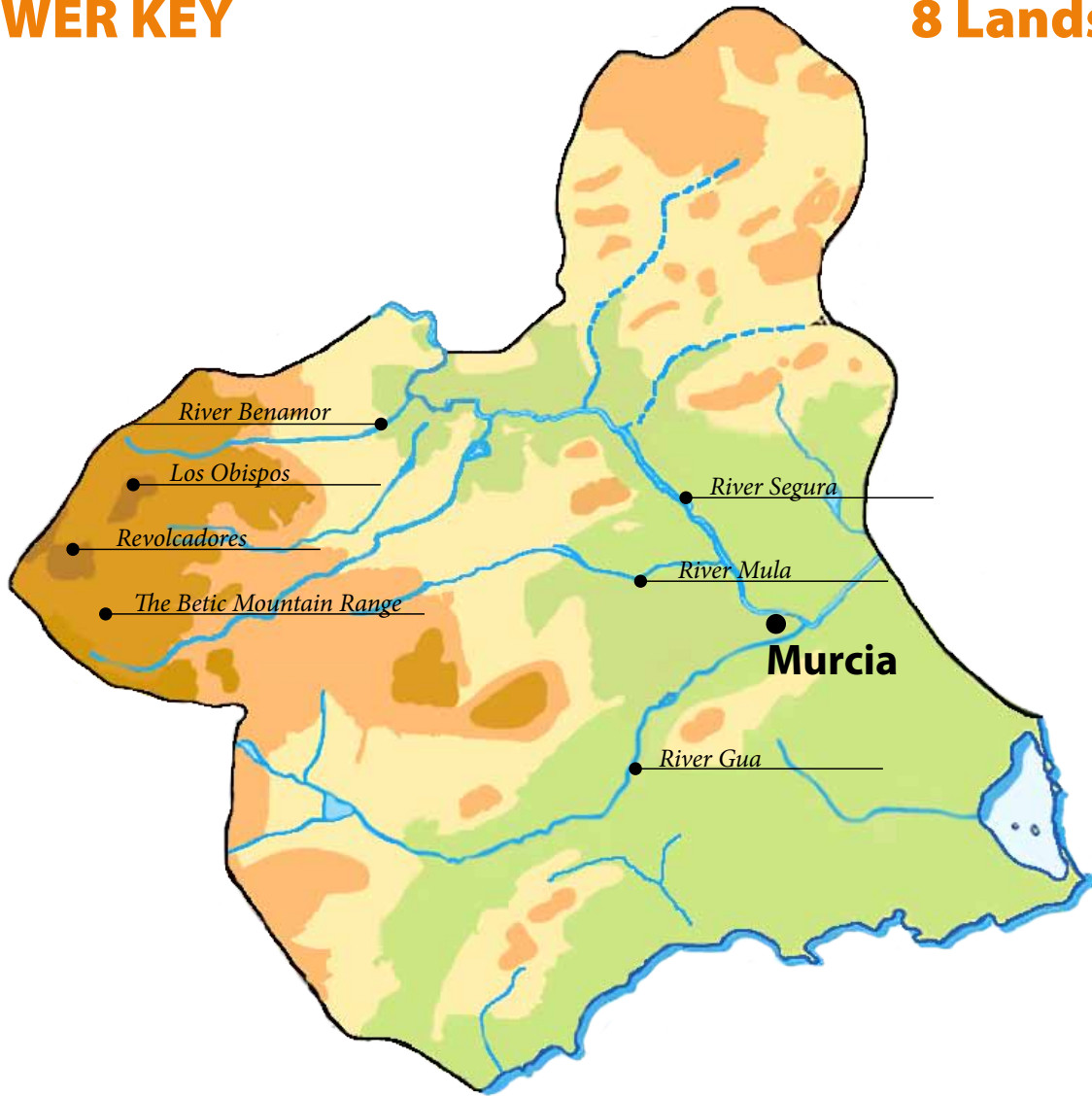
River Guadalentín

River Mula



# ANSWER KEY

# 8 Landscapes



## Read and answer the questions.

- a What is the most important river in Murcia called?

*The River Segura*

- b What are the Mundo, the Alhárabe rivers?

*They are tributaries of the River Segura.*

- c Where is the Mar Menor?

*It is next to the Mediterranean sea*

